



262-671-2032 Milwaukee
608-216-2880 Madison
920-516-2880 Fox Valley
www.bildnow.com

Accessible Stair Solutions



Tour our Showroom

Ride a stairlift • Try a ceiling lift or sit-to-stand • Dozens of grab bars • Automatic door openers • hospital beds



We offer Equipment Rentals

Stairlifts - Modular ramps - Power hoist lifts
Broda Chair - Scooters - Power Wheelchairs



9209 W Bluemound Rd
Milwaukee, WI 53226
262-671-2032
info@bildnow.com

M-F: 9:00 am - 5:00 pm
Walk-ins Welcome To
work with a
therapist-Call for an
appointment

Therapist-owned
company



Certified installers
& technicians



Whole home
solutions



People are healthier and happier when they can stay safely in their own home.

That's our mission — to make that possible for you.

We are **BILD Accessibility Specialists**.

We offer a full 360° range of home accessibility solutions of every kind: from remodeling and design to equipment rental and purchase. Our multidisciplinary team - of physical and occupational therapists, assistive technology providers, accessibility consultants, designers, technicians, and skilled carpenters - brings you a holistic approach to accessibility. And we're proud to be recognized leaders in the field.

Whether you're navigating limited mobility, disability-related challenges, caregiver responsibilities or aging-related needs, we guide you to ***personalized solutions*** that make your home safer, more functional, and comfortable. We make living easier, better, and more dignified for you and your loved ones.

In a world that often rushes people through, clients tell us it's a relief to speak to someone who truly listens. We understand what you're facing - as a client or caregiver - and we'll guide you on your journey:

From stress to relief.

From frustration to freedom.

From limited to independent.



Managing Outdoor Stairs

Modular ramp

Adjustable to different heights and configurations

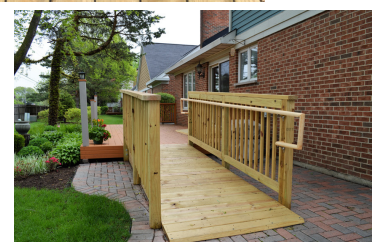
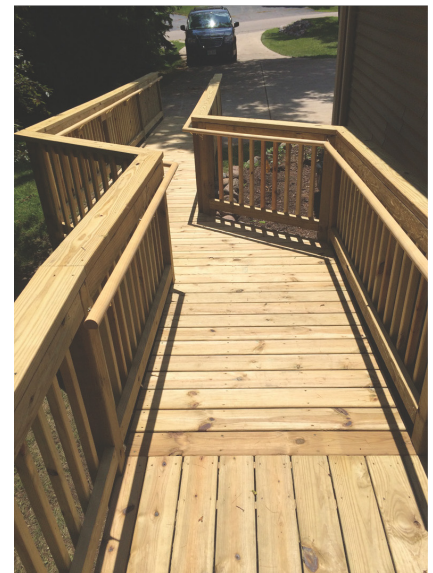
- Available in a number of different styles: aluminum, wood, composite and steel.
 - Aluminum and composite are very low maintenance and will last a lifetime
 - Available in powder coated color finishes.
 - Options for grated flooring for slip resistance and minimal snow and ice accumulation.
 - Fast installation (less than one (1) day).
 - Can be reused at different locations.
 - Typically do not require permits.
 - Can be lengthened or shortened to adjust the slope/grade.
 - Often a cost-effective option and can offer a temporary (rental) or permanent solutions.



Wood ramp

Wood ramps require building permits and concrete footings to secure post.

- Labor costs, permits, and time required often drive the cost up higher than an aluminum ramp, though material cost may be slightly lower. This may be a good option with volunteer labor and manpower when available.
- Disadvantages of using wood include:
 - Increased time and money for permits and labor.
 - Limited life of ramp due to decay.
 - Upkeep and maintenance required.
 - Cannot be modified once installed.



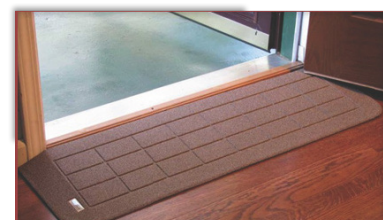
Portable wheelchair ramp:

- Intended for low stair heights.
- Typically used for 1-2 stairs to ensure safe management.
- Different styles available.
- Folding "suitcase ramps" for storage.
- Can be used with vehicles.



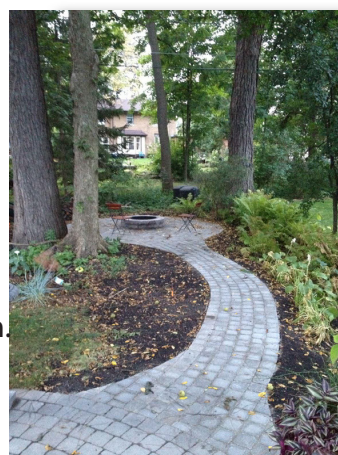
Threshold transition:

- Available in rubber and aluminum.
- Custom colors and finishes.
- Unique solutions for easier wheelchair management for custom heights.



Concrete paths:

- Oftentimes, accessibility can be provided without appearing "handicapped" as with a ramp.
- Creative landscaping can be performed to provide access to a home with beauty.
- Very aesthetically appealing option.
- More expensive option than modular ramps.
- Permanent and cannot be adjusted easily after installation.



Ramp design considerations:

For the best individualized accessible design, consider all entrances to the home and speak with an experienced accessibility specialist to help design a system that will work for you. Some of the more basic considerations are:

- An adequate, level landing at the entry door to manage the doorway safely and independently.
- Adequate railings for safety.
- Intermediate landings for rest breaks.
- Sufficient landing space to the outside of the door handle (to allow a man ageable approach area for the wheelchair user).
- It is very important to account for the end point of the ramp in relation to the top landing of the ramp when determining overall pitch.

Stair lift:

- Indoor and outdoor options.
- Available for straight and curved stairways.
- A great option for managing stairs safely and comfortably for individuals who are able to transfer independently, but may not be able to walk up and down stairs.
- Up to 600 pound weight capacity available.
- Has safety stop sensors and battery backup.



Inclined platform lift:

- Allows an individual in a wheelchair to get up and down stairs without having to transfer from wheelchair or scooter.
- Uses a platform that rides up and down the stairs.
- For both inside and outside.
- Folds up out of the way when not in use.
- Has safety stop sensors & battery backup.



Considering a vertical platform lift:

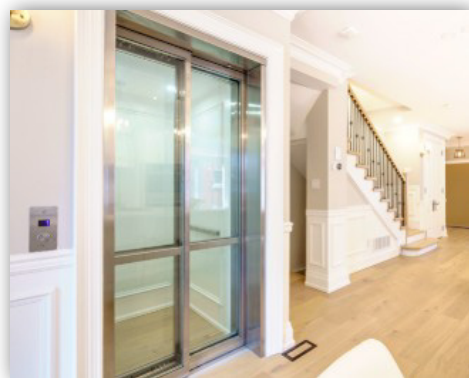
For multiple stairs to enter the home it may actually be more economical and affordable to enter the home with a wheelchair lift system.

- Conserves space with small foot print.
 - May be used in limited spaces such as garage or other sheltered entries.
- Conserve energy vs. extensive ramp.
- Often more cost effective than an extensive ramp when there are numerous steps



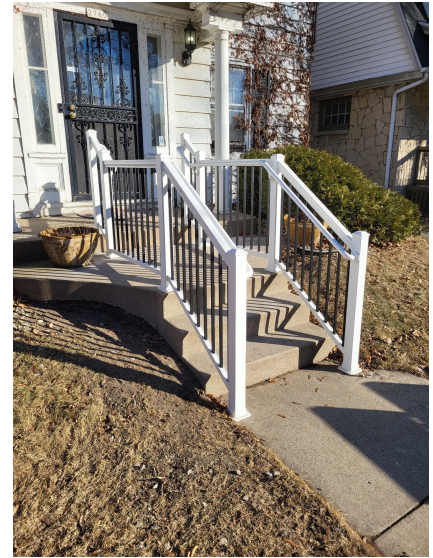
Home Elevator:

- May be customized to blend with your home's décor.
- Requires a hoistway or elevator shaft build to certain specifications and tolerances for it to be installed into your private residence.
- Increases your home's value.
- Battery backup available.
- Easy to manage without need for transfers.
- Automatic door openers and environmental control activation available.



Railings and supports:

- Wood, metal or colored railings or supports can provide safe stair management and transitions.
- Color contrast strategies at stair edges are available to provide traction and visual cues.



Mechanical assisted stair climber:

- Motorized device that lifts an individual up and down the stairs with a trained care giver operating and activating the mechanical lifter.
- For individuals who have the assistance of a trained caregiver.
- Can integrate with a manual wheelchair or use with its own seat system.
- Easily disassembles to fit into car for travel.
- Can manage outdoor or indoor stairs.



Flex Step Wheelchair Lift

Stairs that convert into a wheelchair lift



- Heavy duty weight capacity – 880 lbs
- Beautiful design
- Operates on battery backup
- Space saving solution
- Built-in safety sensors

The Flex Step staircase converts between a wheel-chair lift and a staircase. This allows access for both wheelchair users and non-wheelchair users, saving space and eliminating the need for a land-ing.



View a demonstration on www.bildnow.com

RENTAL EQUIPMENT

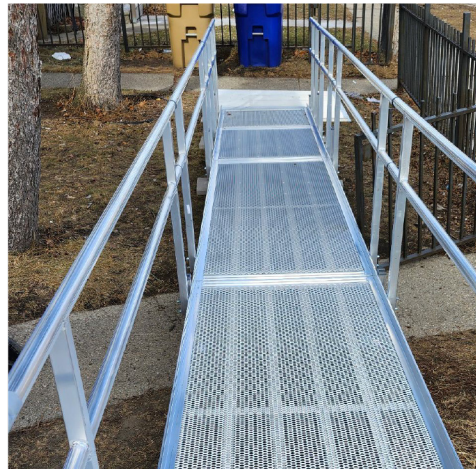


Financing
Available!

BILD is proud to offer a wide variety equipment for rental. All rentals are month-to-month, with a minimum rental period of 30 days.



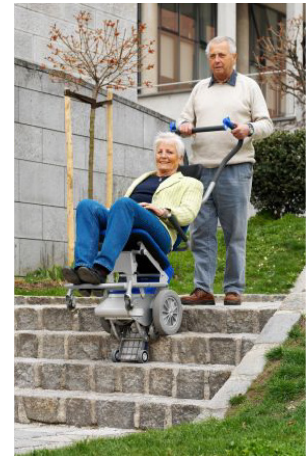
portable ramps
2' - 12'



modular ramps



stairlifts



stair climber



electric chairs



electric scooters



electric hospital beds



lift recliner chairs

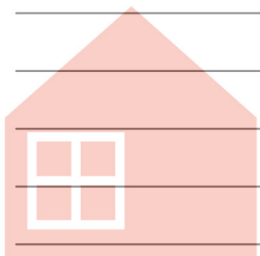


Sit-to-Stands & Hoyer lifts



Manual & Power Patient Lifts

NOTES



bild

The BILD Difference



Superior products

- High quality American-made products.
- Low maintenance solutions.

More options

- Diverse and effective solutions for independence.
- Service and maintenance programs.
- Visit www.bildnow.com to learn more about our services.

Superior service & knowledge

- National educators for health care professionals on the topic of accessible design and solutions.
- Trained accessibility specialists who are experienced physical and occupational therapists.
- High quality & warranted craftsmanship.



bild Accessibility Showroom

9209 W Bluemound Rd, Milwaukee, WI 53226

Automatic Door Opener
Bathroom Accessibility
Broda Chairs
Ceiling Lift Demos
Grab Bar Display
Hospital beds

Kitchen Accessibility
Lift Chairs
Patient Transfer Lifts
Stairlift Demos
Scooters
Wheelchairs

On-Staff Accessibility Consultants

BILD is the premier provider of accessible modifications and safe handling transfer and exercise assist technology for homes and facilities.

We offer the expertise of national educators on transfer and exercise lift technology.



Visit us online at
www.bildnow.com

Call us for a FREE ESTIMATE!

(MILWAUKEE): 262-671-2032

(MADISON): 608-216-2880

(FOX VALLEY): 920-516-2880

 **bild**
Accessibility Showroom

9209 W Bluemound Rd

Milwaukee, WI 53226

East of the Zoo on Bluemound Rd.

Call to Schedule a Tour!



Let us help you live your healthiest life.



Ask us how CareCredit can help pay for deductibles and out-of-pocket healthcare expenses.

Automatic Door Opener

Bathroom Accessibility

***Broda Chairs**

***Ceiling Lift**

Grab Bars

***Hospital Beds**

Kitchen Accessibility

***Lift Chairs**

***Patient Transfer Lifts**

***Stairlifts**

***Scooters**

***Wheelchairs**

On-Staff Accessibility Consultation

***represents equipment available for rent.**