

**ARJOHUNTLEIGH**

GETINGE GROUP

**SARA PLUS**

THE ADVANCED STANDING  
AND RAISING AID



...with people in mind

# SECURITY, MOBILISATION, TRAINING...



**...ALL-ROUND BENEFITS FROM  
THE COMFORT CIRCLE**



**SARA Plus joins SARA 3000 as an advanced addition to the ArjoHuntleigh standing and raising aid family. Activating mobility during transfers**

SARA Plus is an ergonomic standing and raising aid that mobilises residents during everyday activities such as transfers and toileting.

However, SARA Plus offers something extra. It extends the mobility-activating benefits of the standing and raising aid to more residents than ever before. The key is the extra resident support given by the Comfort Circle, which comprises of the Arc-Rest and a sling selected for individual needs. The unique Arc-Rest is an integral part of the lifting mechanism, providing exceptional upper body support during the raising action. Another unique feature, the Pro-Active Pad, a height-adjustable knee support, promotes a better transition to the standing position by allowing natural flexion of the ankle.

With its unique features, SARA Plus increases and extends the benefits that can be achieved by using a standing and raising aid, and will contribute to improving not only the quality of care, but also the quality of resident's everyday lives.

**Enhancing mobility through exercises**

SARA Plus also offers something extra in the area of exercise. It is the only standing and raising aid that is designed for balance, stepping and walking training. The Comfort Circle provides the necessary resident support. Simply remove the footplate and Pro-Active Pad, and SARA Plus becomes an optimal platform for exercise sessions. This training aspect gives SARA Plus an even more valuable role in care environments as an enhancer of residents' mobility.

**Sling solutions**

The sling is an integral part of the Comfort Circle, and a range of solutions is available to suit specific needs. In addition to the basic standing sling, a special BOS/EPS sling enables standing in a more upright position, which is more favourable for rehabilitation. The transfer/walking sling supports residents who need to be transferred in a seated position, and is also ideal for walking exercises.



A single carer can manage transfers, safely and efficiently.



Supporting a more upright standing position makes the BOS/EPS sling ideal for rehabilitation.



The footplate provides safety and stability, while the Pro-Active Pad allows natural flexion of the ankle.



The Arc-Rest offers excellent support and promotes a sense of security.

### Key features

- Arc-Rest provides exceptional support and comfort.
- Safe working load: 190 kg (420 lbs).
- Designed to offer balance, stepping and walking training.
- Detachable footplate and Pro-Active Pad enable walking exercises.
- Low-friction castors, the rear pair with brakes

### Resident benefits

- Mobility is activated during everyday transfers.
- Enables stepping and walking exercises, which enhance mobility benefits.
- Provides a safe and comfortable environment.
- Various sling solutions are available (standing, BOS/EPS transfer/walking slings and wipe down sling).

### Carer benefits

- An easy-to-manoeuvre machine means reduced strain.
- A single carer can safely supervise a transfer or walking exercise.
- Handset control means you always work close to the resident.
- Dual controls offer alternative or back-up to handset.



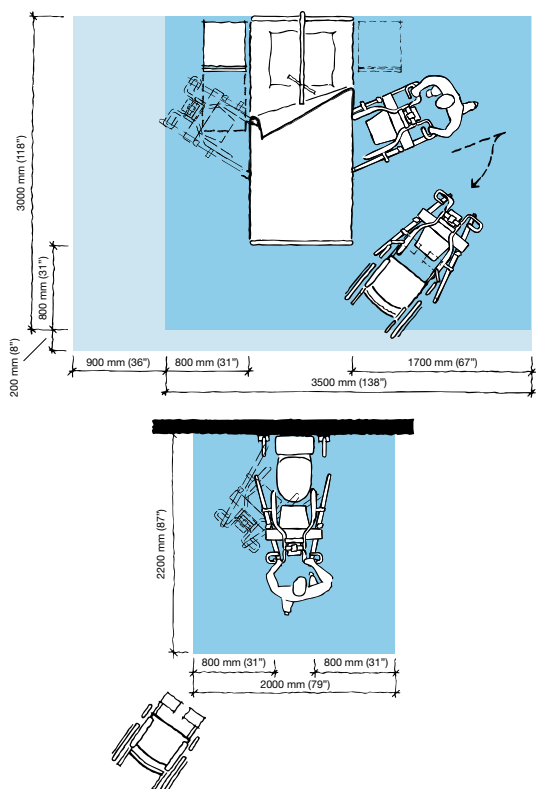
For transfers, the powered chassis can be opened for optimum access.



Dual controls. Handset or mast panel control? The carer can choose the most convenient control according to the situation.

# PRODUCT SPECIFICATIONS

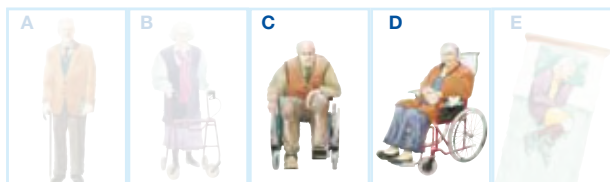
## Space requirement



- Blue area shows the minimum working area required for the staff to be able to use the mechanical aids in an ergonomic way from one side.
- Light blue area shows required extension of working area to facilitate activities from either side to provide adequate access for the resident, mechanical aid and assisting carer.

## Mobility Gallery

Suitable for Carl and Doris\*



**C Carl**, who sits in a wheelchair and has little capacity to support himself

**D Doris**, who has no capacity to support herself

Please contact ArjoHuntleigh for further information on the Mobility Gallery™.

\* With the unique support of the EPS/BOS sling a raising and transfer is feasible.

## Product information

Max. safe working load	190 kg (420 lbs)
Weighing capacity	140 kg (308 lbs)
Weight	85 kg (187 lbs)
Weight with Scale	95 kg (209 lbs)
Total length	1033 mm (40 5/8")
Min. lifting height	906 mm (35 5/8")
Max. lifting height	1497 mm (58 7/8")
Total height	1195 mm (47")
Height of chassis	116 mm (4 5/8")
External width legs closed	646 mm (25 3/8")
Internal width legs open	1002 mm (39 1/2")
Low friction castors, the rear two with brakes	
Battery	24V 5Ah
Two batteries and one charger are supplied with each Sara Plus	
Protection class	Lifter IPX4 Handset IP67
Battery Discharge Indicator (BDI) – Displays remaining power and indicates when the battery needs charging	

Service meter – Displays the total motor usage time

Emergency stop and system failure override

## Option

Integrated scale

## Accessories

Commode seat

Foot board narrow

Foot board extension

Kneepad wide

Kneepad fleece cover

Arm straps

Leg straps

## Approvals

The product is in compliance with current legislation and applicable product standards.

Only ArjoHuntleigh designed parts, which are designed specifically for the purpose, should be used on the equipment and products supplied by ArjoHuntleigh. As our policy is one of continuous development we reserve the right to modify designs and specifications without prior notice.

® and ™ are trademarks of the ArjoHuntleigh group of companies. © ArjoHuntleigh, 2010.

# ARJOHUNTLEIGH

## GETINGE GROUP

[www.ArjoHuntleigh.com](http://www.ArjoHuntleigh.com)

**Arjo International AB**

PO Box 61

SE-241 21 Eslöv

SWEDEN

Phone: +46 413 645 00

Fax: +46 413 645 63